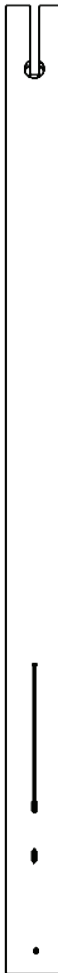
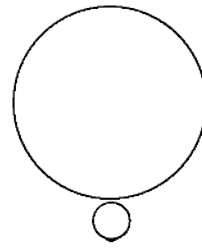
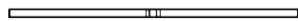
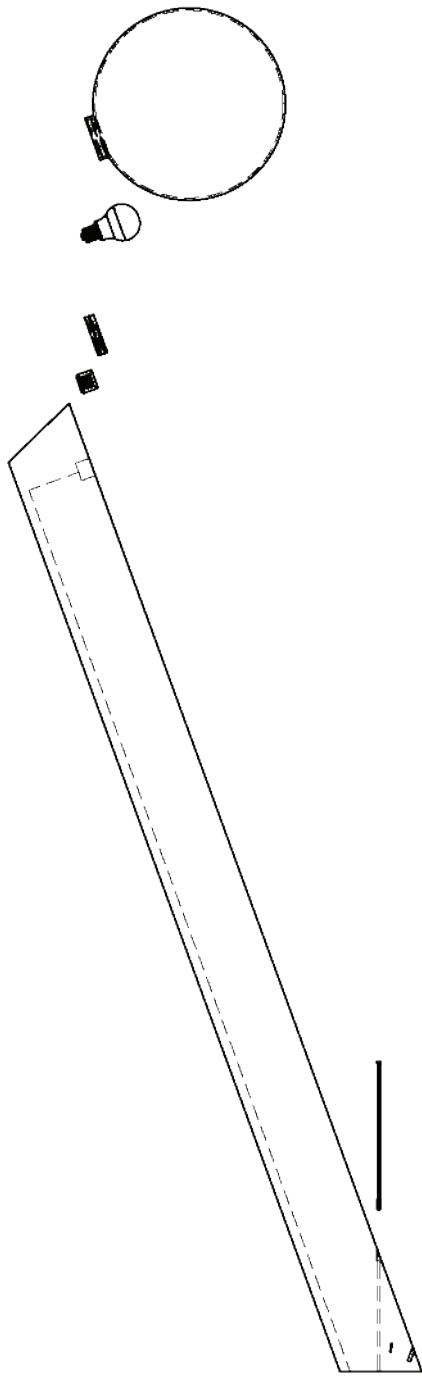
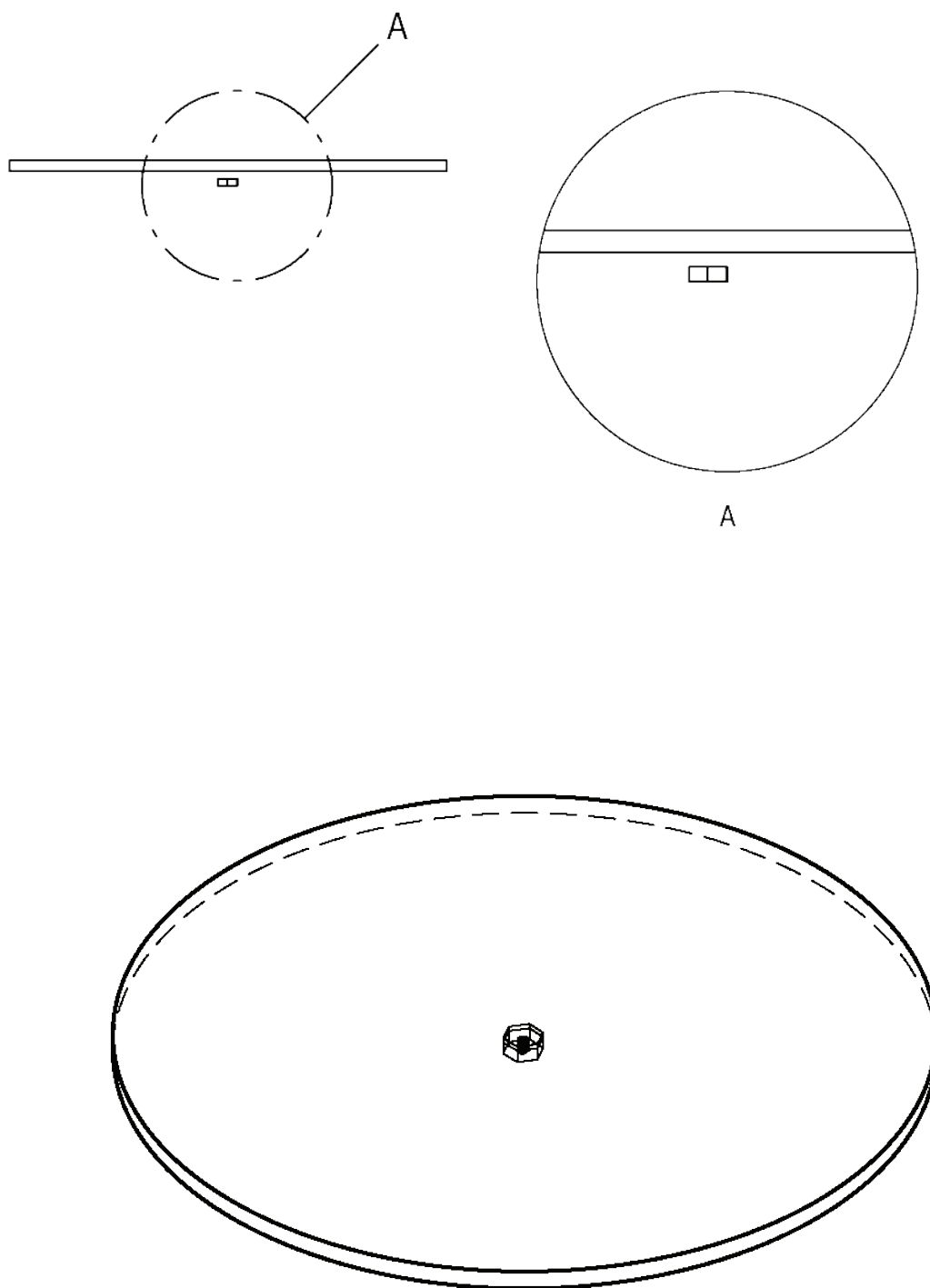


LUMIS

Assembly Manual

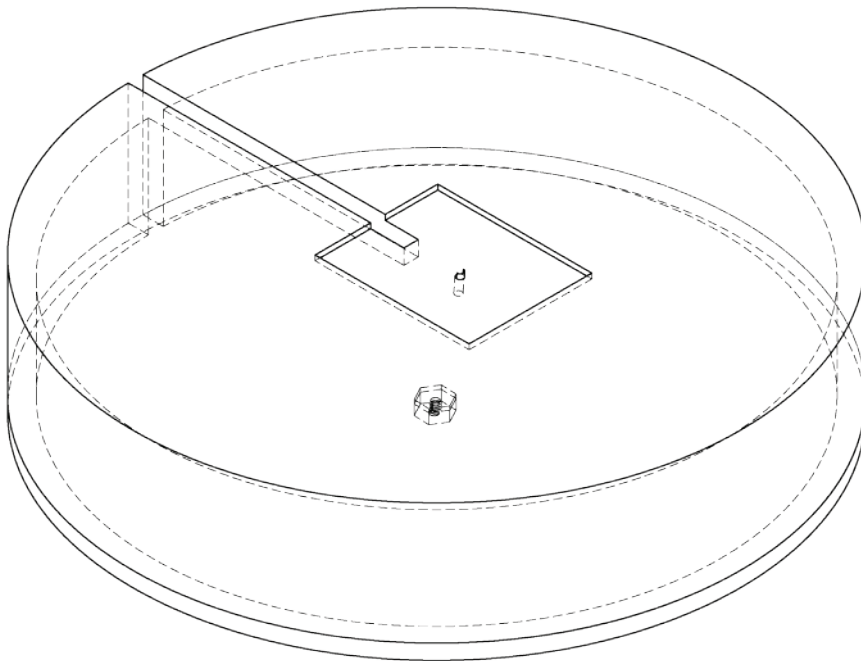
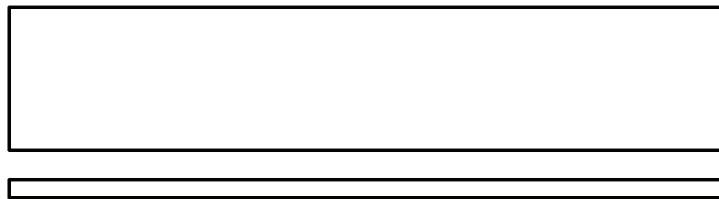


1

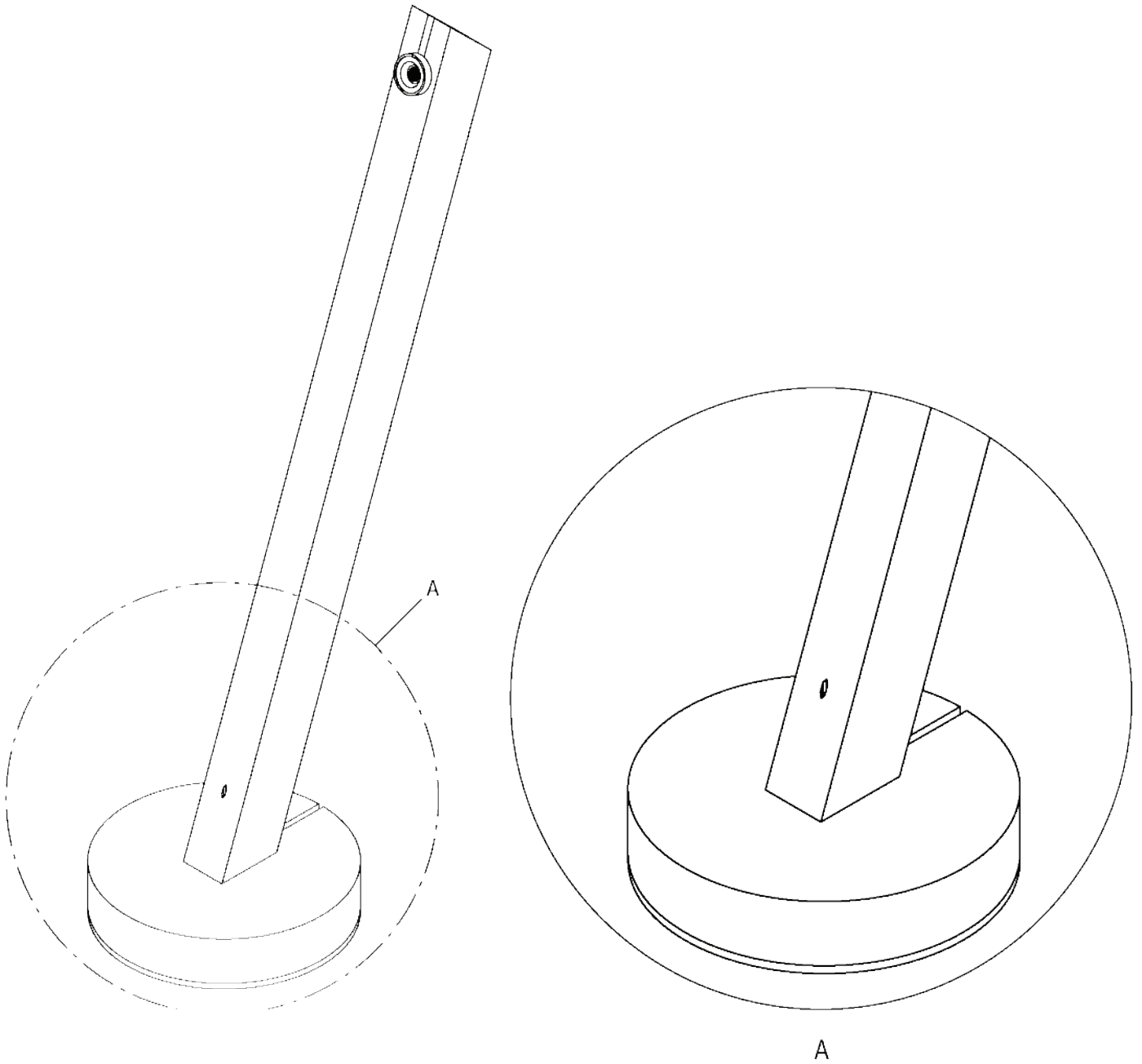


Insert the Hex Nut

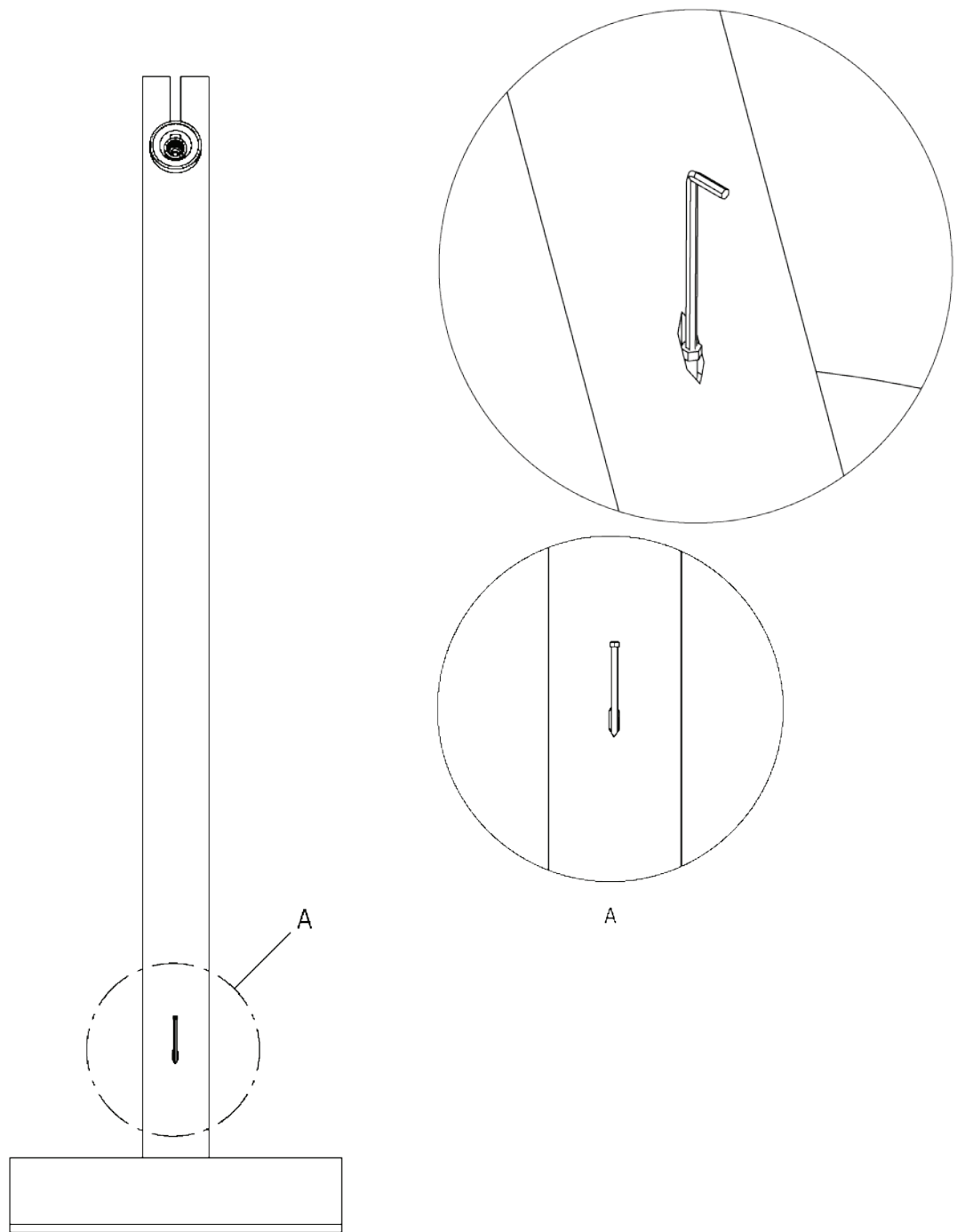
Place the metal base flat on the ground. Insert the hex nut into the designated hole on the underside of the metal base as shown in the diagram above.

**Align the Wooden Cover**

Position the wooden cover on top of the metal base. Ensure that the diameter of the wooden cover is perfectly aligned with the metal base.

**Insert the Wooden Pole**

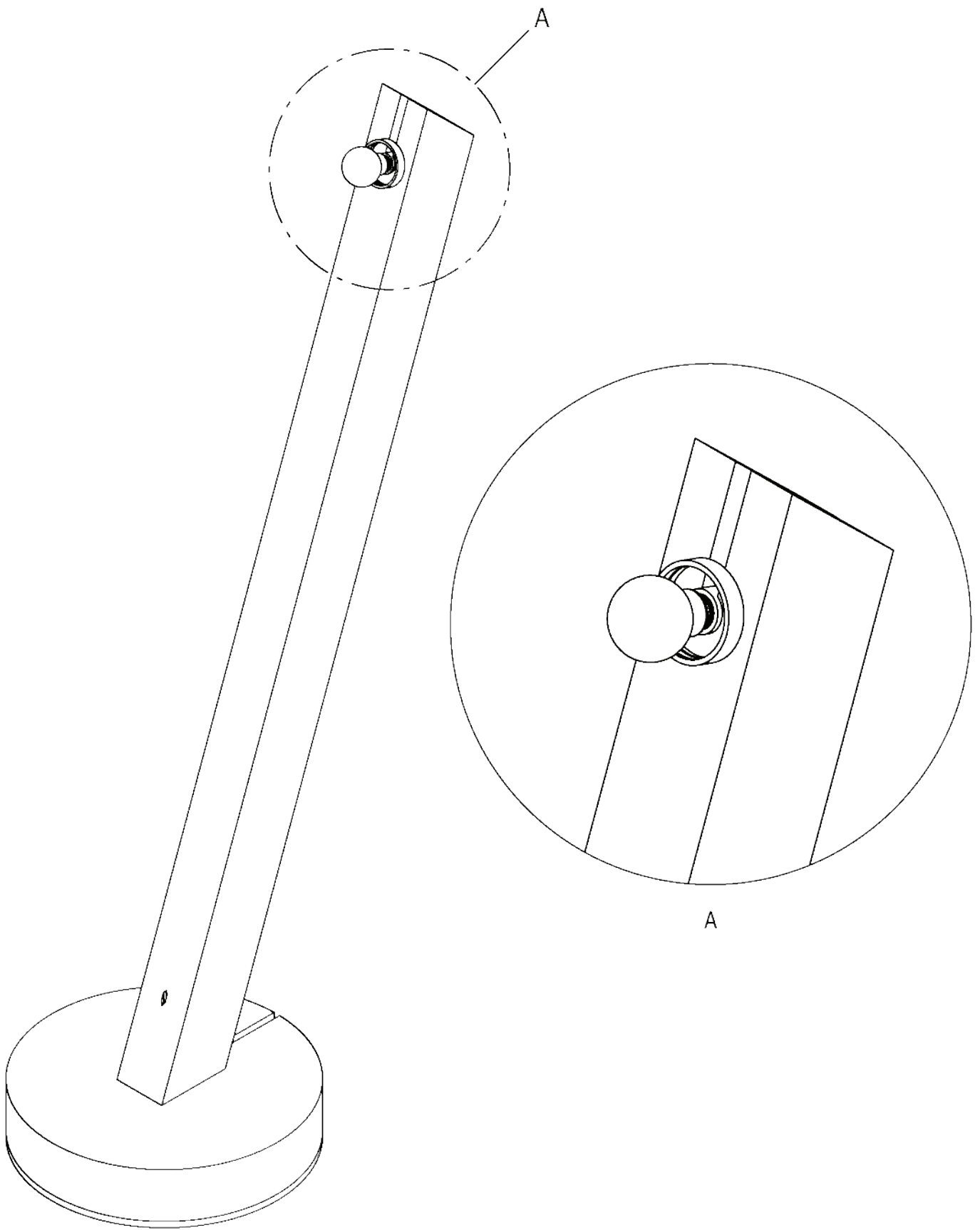
Insert the wooden pole into the bracket located at the center of the wooden cover. Press firmly to snap it into place.



Secure the Hex Screw

Insert the hex screw into the slot in front of the wooden pole. Using the Allen key provided, screw the bolt in until it is tightly fastened.

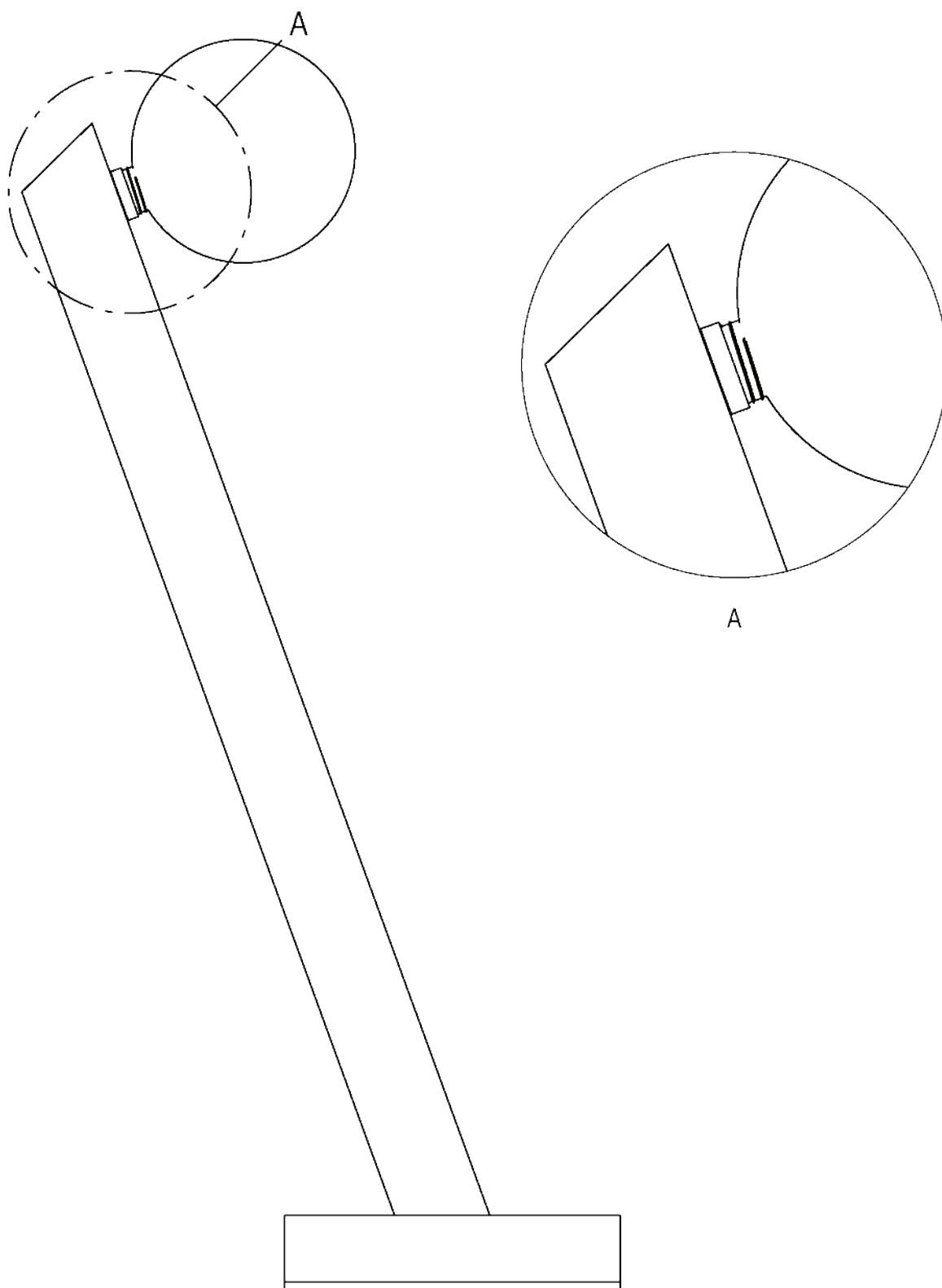
5



Install the Bulb

Screw the provided standard Edison bulb into the socket.

6



Attach the Light Covering

Insert light cover and screw it into place.

WhatsApp: +880-1913-135707

Email: Lumis@gmail.com

Lumis is delighted to offer the best service